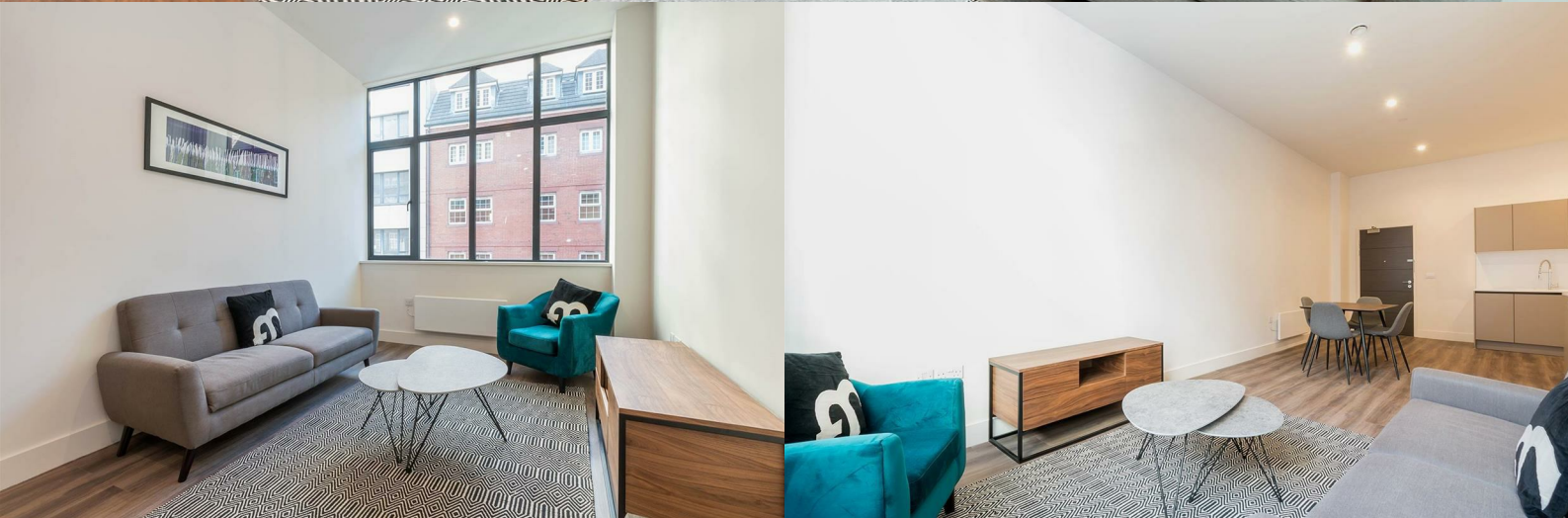




**RENT
ME**



The Lightwell, B3 2EE

CITY CORE

£1,450 PCM

available from 28th July 2026

- High quality apartment
- Three bathrooms: two en-suites and one guest WC
- Large living area with natural lighting throughout
- Central Colmore Business District city core location
- 0.4 miles to New Street station
- Two contemporary double bedrooms
- Fully integrated kitchen
- Smartly furnished throughout
- 0.1 miles to Snow Hill station
- Managed by FleetMilne



fleetmilne.co.uk

0121 366 0456

FleetMilne